

Flat 11 637 Wilbraham Road, Chorlton, Manchester, M21 9JT



**JP&Brimelow**  
ESTATE AGENTS

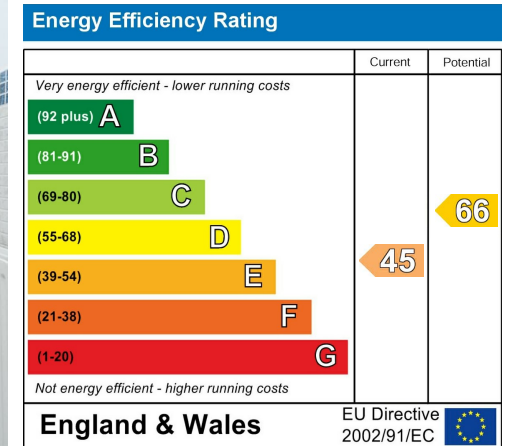
# Offers In The Region Of £169,000

\*\*\*VIDEO TOUR AVAILABLE\*\*\* A light and spacious DOUBLE BEDROOM, first floor apartment positioned at the front of the development within this attractive bay fronted period Victorian semi-detached property. Situated in a leafy location on a highly popular residential road. Within strolling distance to both the centre of Chorlton and Beech Road, with its array of independent shops, local amenities and parks. The Metrolink on Wilbraham Road, gives you direct access into the City Centre, Manchester airport and Media city. The well-planned accommodation comprises; a communal entrance hallway, a private entrance hall, a fantastic lounge/dining room, a fitted kitchen, an impressive double bedroom with a bay window and a four-piece white bathroom suite. The property is warmed by gas fired central heating, parking to the front aspect and a well-maintained communal lawned garden to the rear. OFFERED WITH NO VENDOR CHAIN.



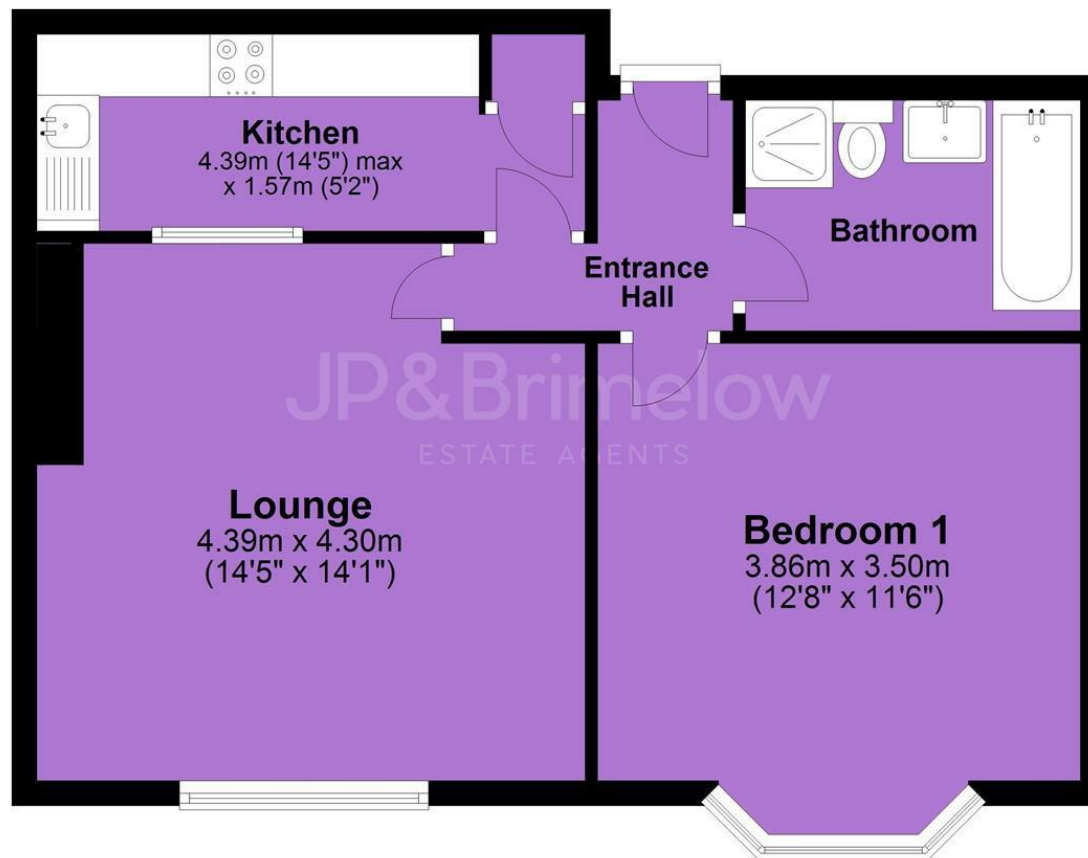


## EPC Chart



Tenure: **Leasehold** Council Tax Band: **B**

## Top Floor



Chorlton & Didsbury Ltd  
 430 Barlow Moor Road, Chorlton, Manchester, M21 8AD  
 Chorlton: 0161 882 2233 Didsbury: 0161 448 0622  
 E: [chorlton@jpbrimelow.co.uk](mailto:chorlton@jpbrimelow.co.uk) [www.jpbrimelow.co.uk](http://www.jpbrimelow.co.uk)



**JP & Brimelow**  
 ESTATE AGENTS

NOTICE: J P & Brimelow Chorlton & Didsbury Ltd for themselves and for the vendors or lessors of this property whose agents they are give notice that:

- (i) the particulars are set out as a general outline only for the guidance of intending purchasers or lessees, and do not constitute, nor constitute part of, an offer or contract;
- (ii) all descriptions, dimensions, references to the condition and necessary permissions for use and occupation, and other details are given in good faith and are believed to be correct but any intending purchasers or tenants should not rely on them as statements or representations of fact but must satisfy themselves by inspection or otherwise as to the correctness of each of them;
- (iii) no person in the employment of JP & Brimelow Ltd has any authority to make or give any representation or warranty whatever in relation to this property.



Follow us on Twitter @jpandbrimelows